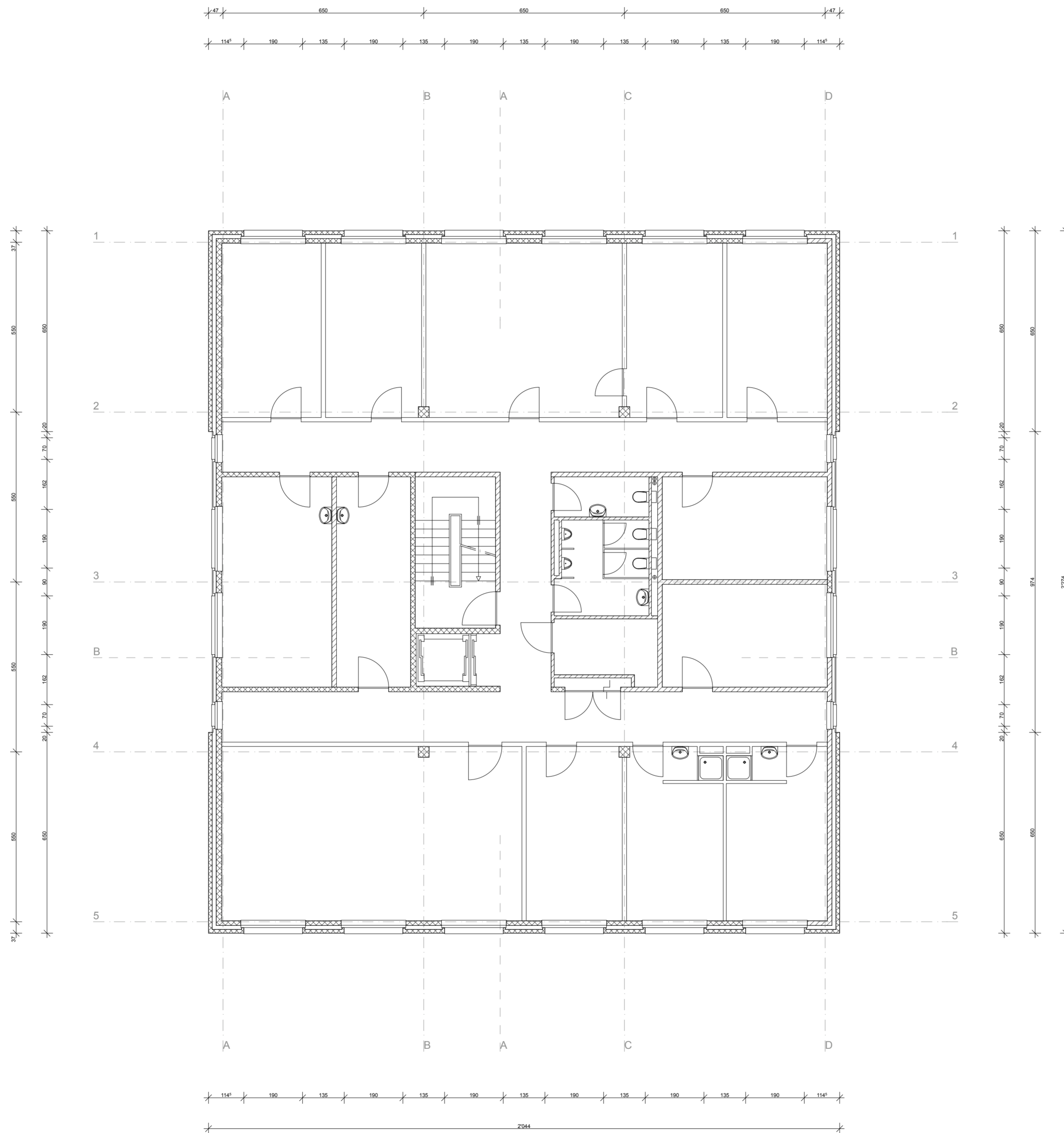


FRIBOURG - CASERNE DE LA POYA  
Bâtiment 1

Rez-de-chaussée  
Existant

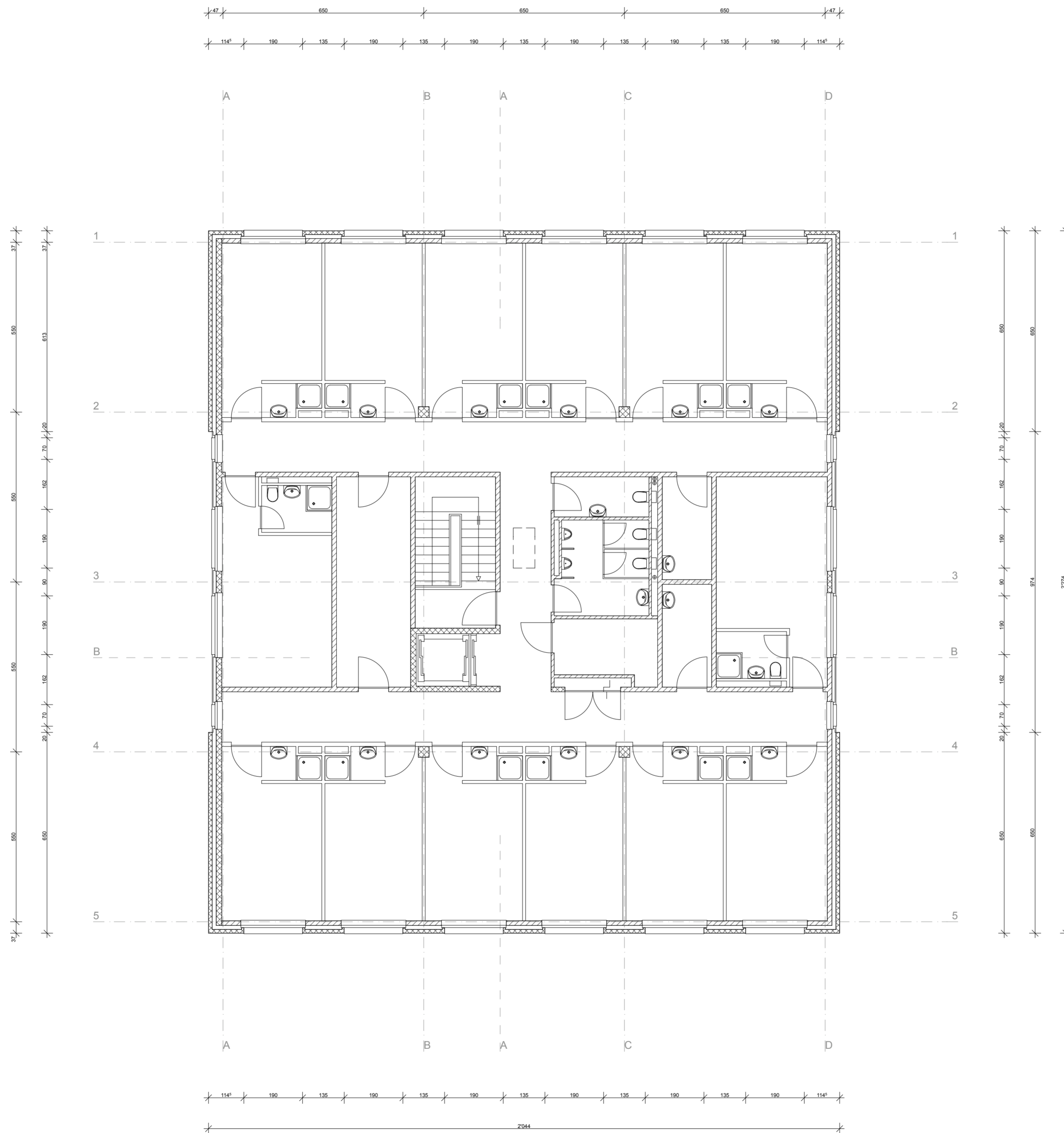
01.03.2010/jb  
1/100



FRIBOURG - CASERNE DE LA POYA  
Bâtiment 1

1er étage  
Existant

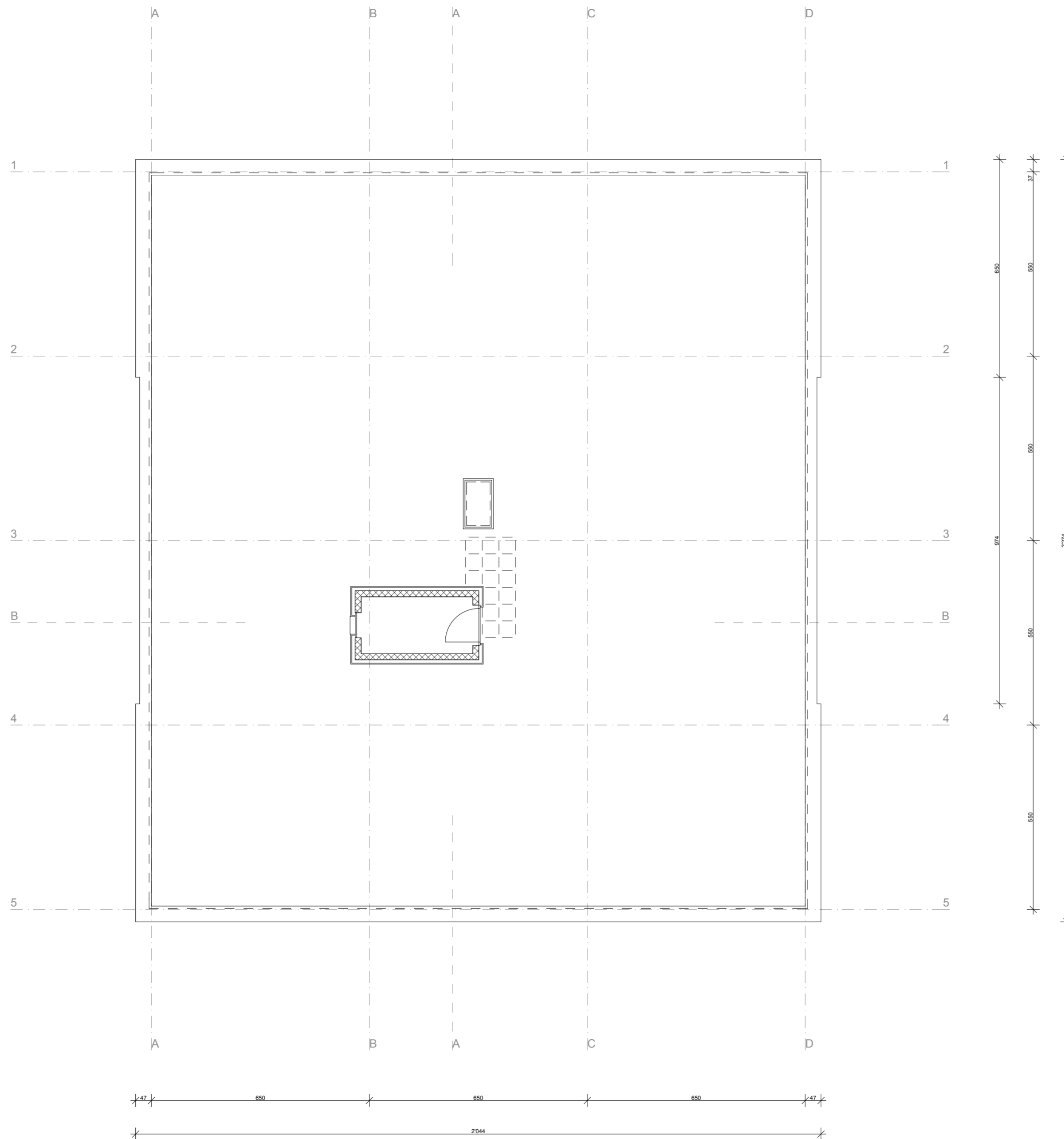
01.03.2010/jb  
1/100



FRIBOURG - CASERNE DE LA POYA  
Bâtiment 1

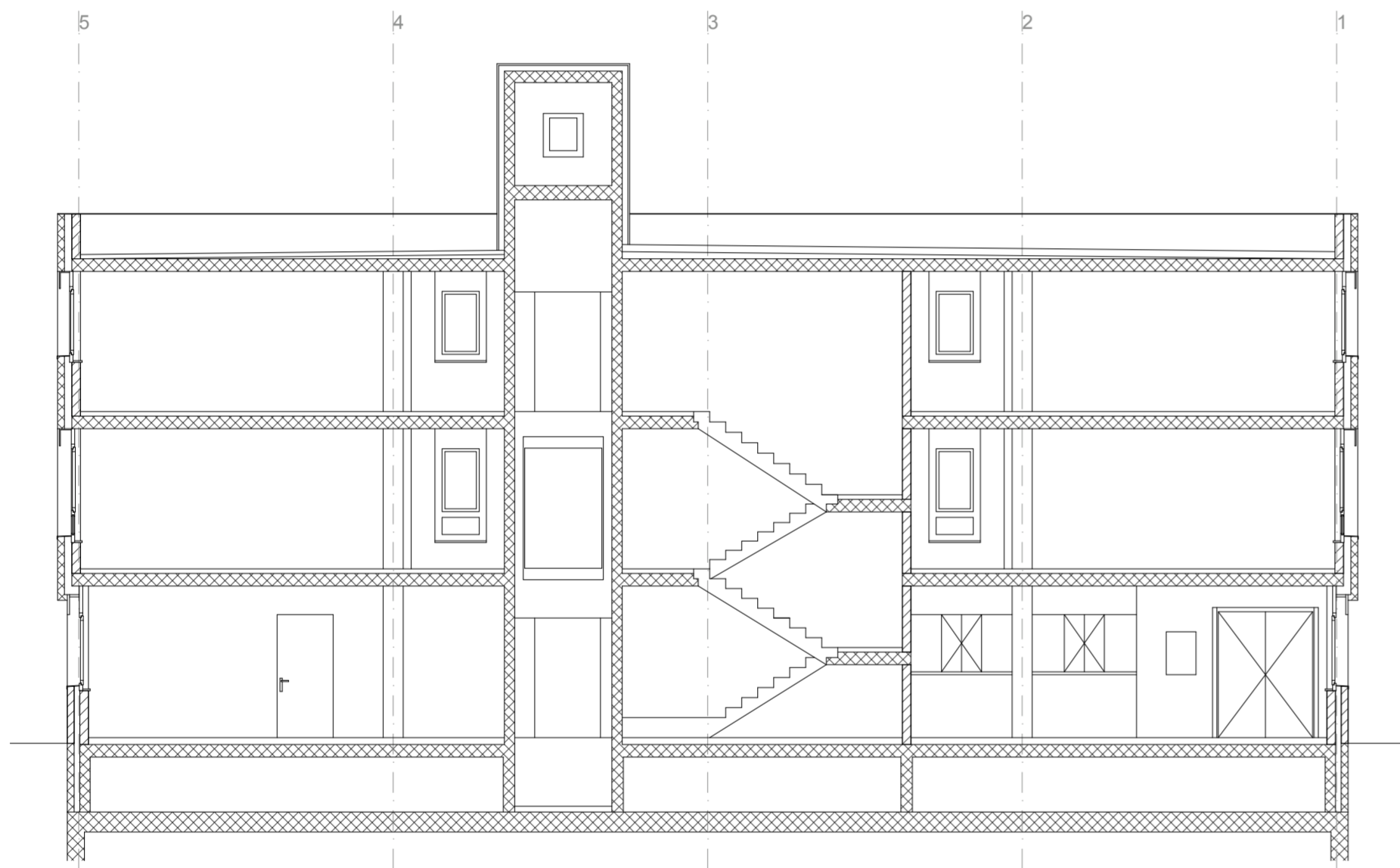
2ème étage  
Existant

01.03.2010/jb  
1/100

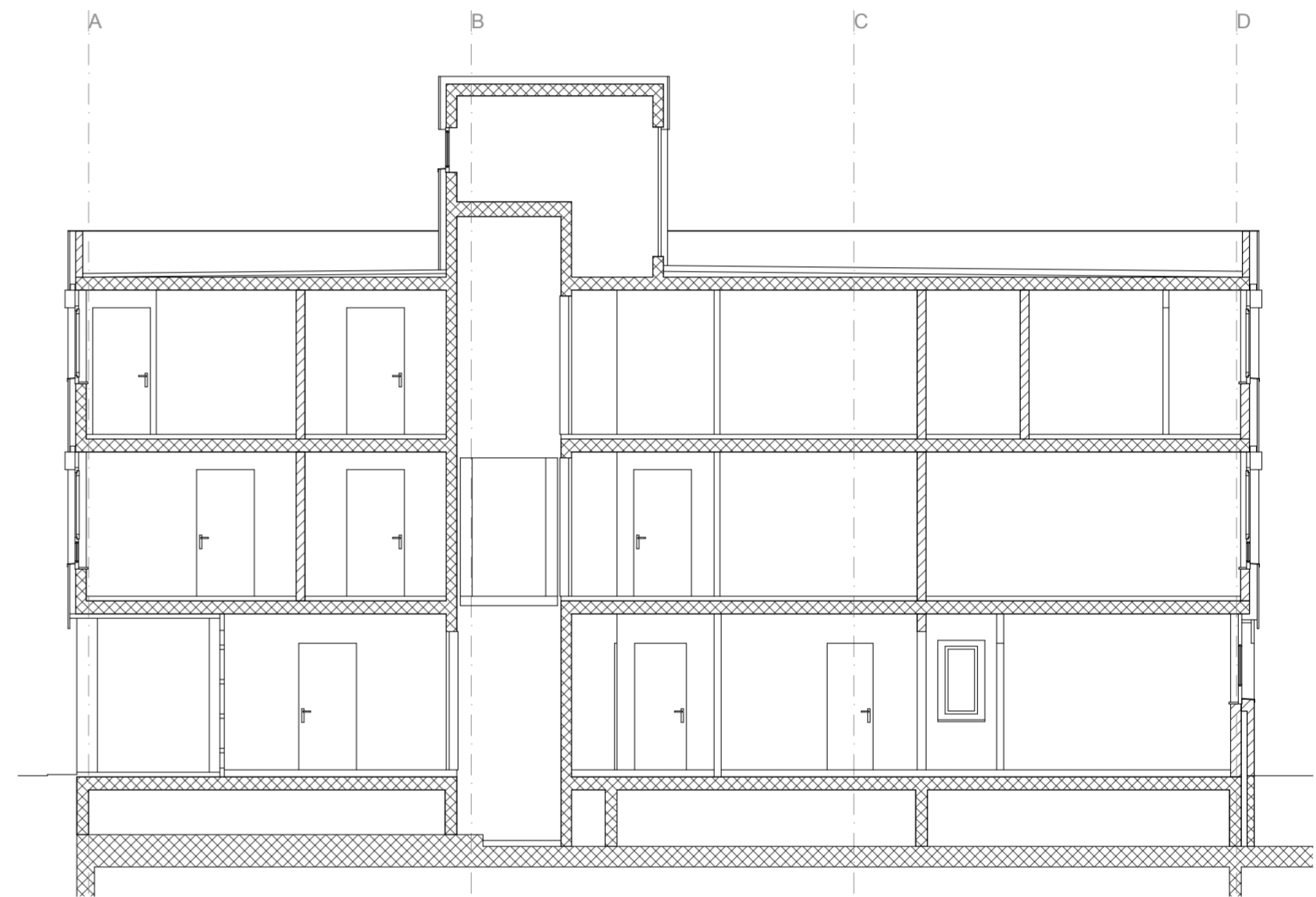


FRIBOURG - CASERNE DE LA POYA  
Bâtiment 1

Toiture 01.03.2010/jb  
Existant 1/100



coupe A-A



coupe B-B

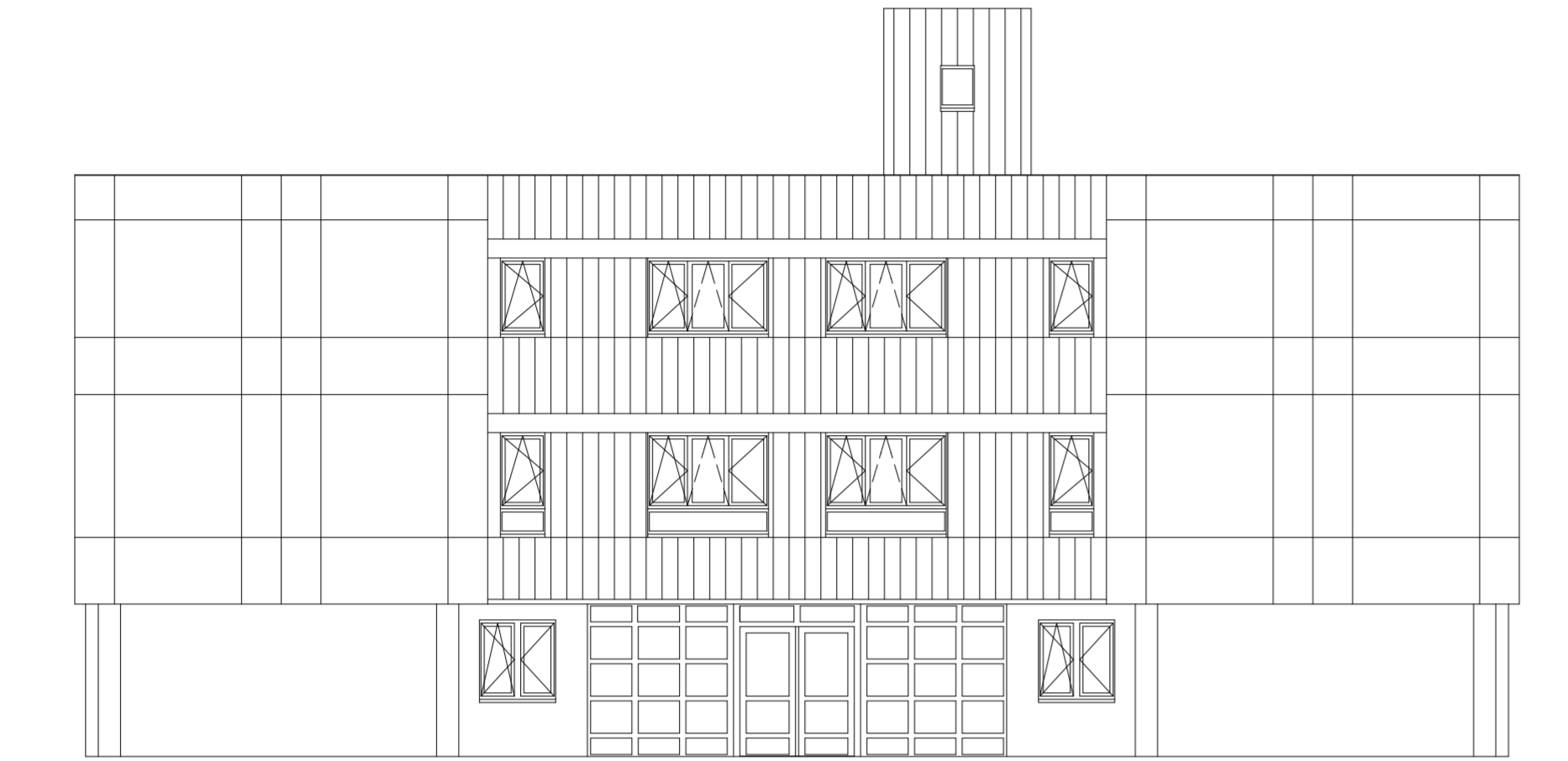
FRIBOURG - CASERNE DE LA POYA  
Bâtiment 1

Coupes  
Existant

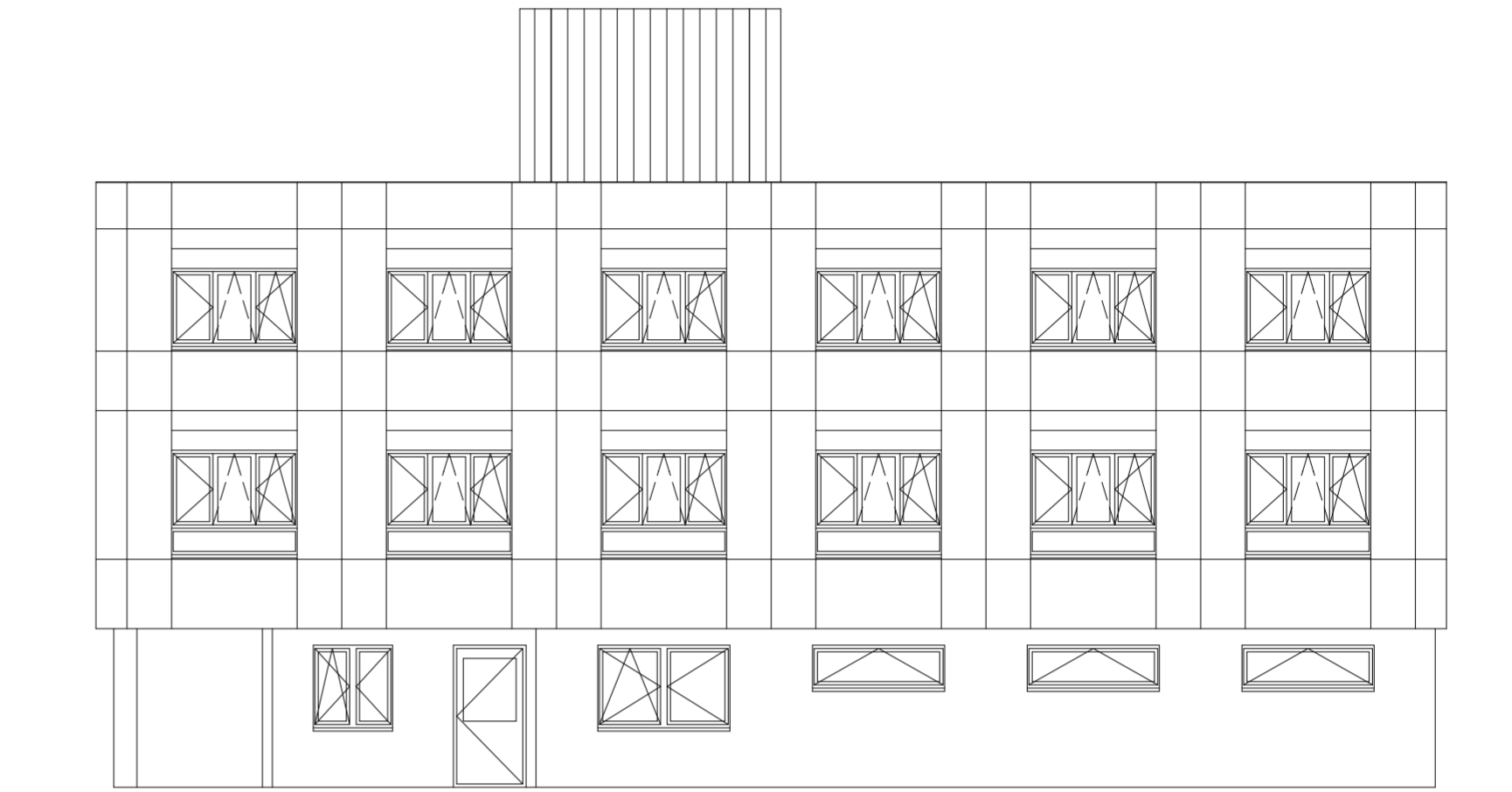
01.03.2010/jb

1/100

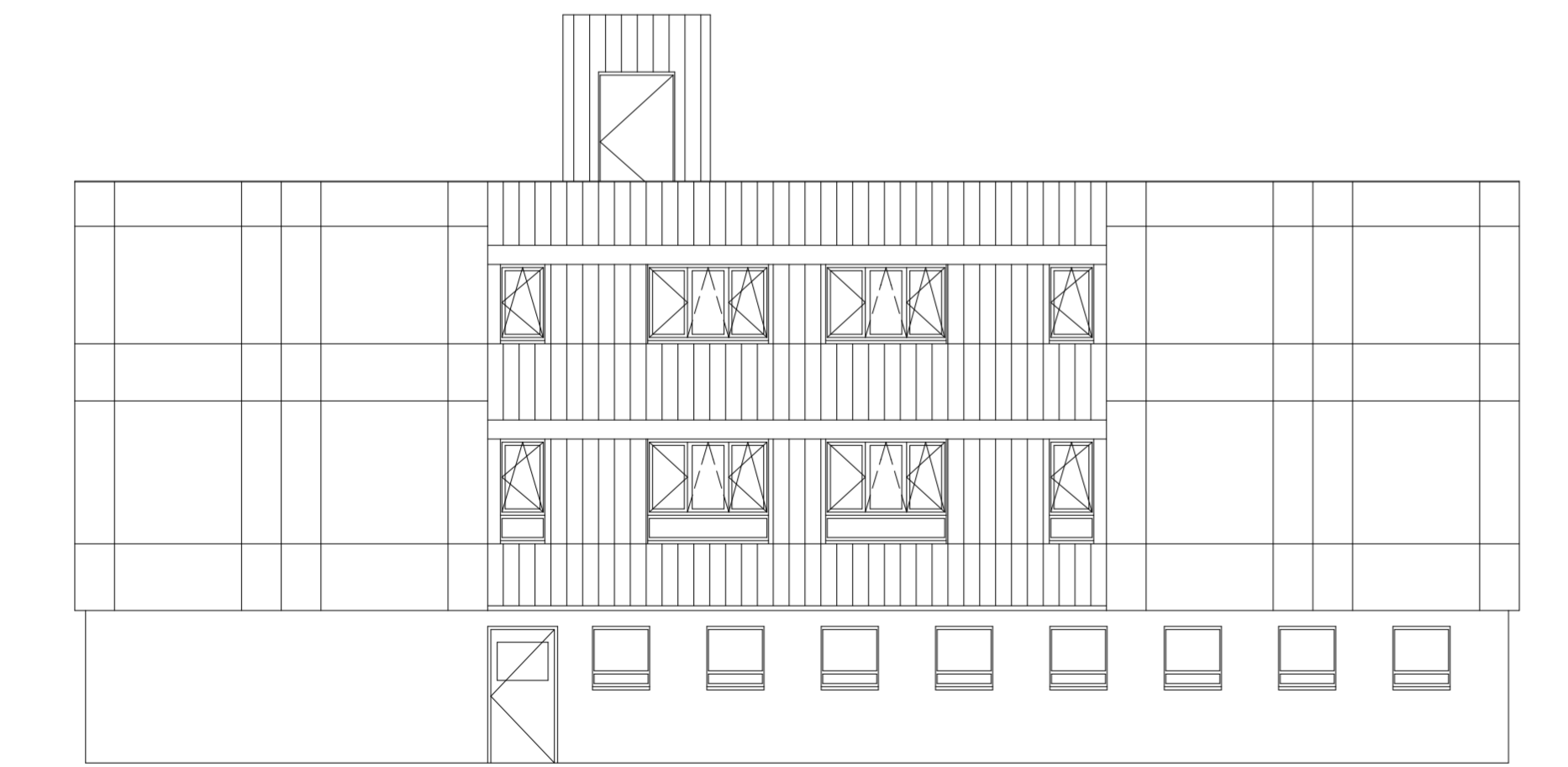
ANDREY, SCHENKER, SOTTAZ SA - Architectes - 1700 Fribourg  
Simplon 13 - cp 59 - 026/424.00.70 - ass.architectes@bluewin.ch



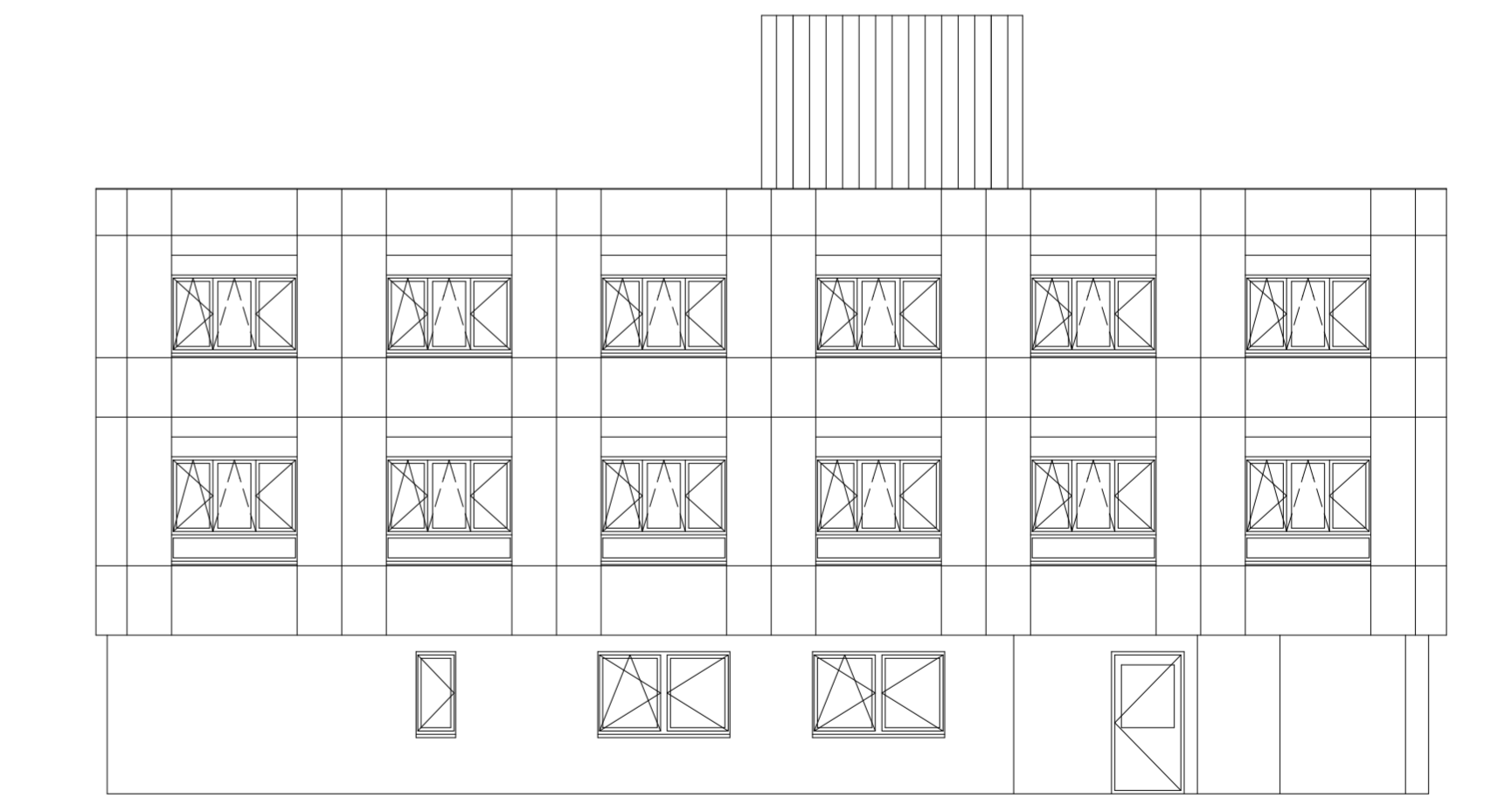
sud-ouest



sud-est



nord-est



nord-ouest

**FRIBOURG - CASERNE DE LA POYA**  
**Bâtiment 1**

**Façades**  
 Existant

01.03.2010/jb

1/100

ANDREY, SCHENKER, SOTTAZ SA - Architectes - 1700 Fribourg  
 Simplon 13 - cp 59 - 026/424.00.70 - ass.architectes@bluewin.ch